



# A FREE CASH FLOW FOCUSED GOLD PRODUCER

March 2021





# Cautionary Notes



## Cautionary Note Regarding Forward-Looking Statements

Except for statements of historical fact relating to us, certain statements contained in this presentation constitute forward-looking information, future oriented financial information, or financial outlooks (collectively "forward-looking information") within the meaning of Canadian securities laws. Forward-looking information may be contained in this document and our other public filings. Forward-looking information relates to statements concerning our outlook and anticipated events or results and in some cases, can be identified by terminology such as "may", "will", "could", "should", "expect", "plan", "anticipate", "believe", "intend", "estimate", "projects", "predict", "potential", "continue" or other similar expressions concerning matters that are not historical facts.

Forward-looking statements in this presentation are based on certain key expectations and assumptions made by us. Although we believe that the expectations and assumptions on which such forward-looking statements are based are reasonable, undue reliance should not be placed on the forward-looking statements because we can give no assurance that they will prove to be correct. Forward-looking statements are subject to various risks and uncertainties which could cause actual results and experience to differ materially from the anticipated results or expectations expressed in this presentation. The key risks and uncertainties include, but are not limited to: local and global political and economic conditions; governmental and regulatory requirements and actions by governmental authorities, including changes in government policy, government ownership requirements, changes in environmental, tax and other laws or regulations and the interpretation thereof; developments with respect to the coronavirus disease 2019 ("COVID-19") pandemic, including the duration, severity and scope of the pandemic and potential impacts on mining operations; and other risk factors detailed from time to time in our reports filed with the Canadian securities regulatory authorities.

Forward-looking statements in this presentation include statements concerning, among other things: forecasts; outlook; timing of production; production, cost, operating and capital expenditure guidance; our intention to return excess attributable free cash flow to shareholders; the timing and implementation of the dividend policy; the granting of any 'Supplemental Dividends' or the implementation of any share buyback program or other supplements to the 'Base Dividend'; statements regarding plans or expectations for the declaration of future dividends and the amount thereof; future cash costs and all-in sustaining costs ("AISC") per payable ounce of gold, silver and other metals sold; the prices of gold, silver and other metals; mineral resources, mineral reserves, realization of mineral reserves, and the existence or realization of mineral resource estimates; our ability to discover new areas of mineralization; the timing and extent of capital investment at our operations; the timing and extent of capitalized stripping at our operations; the timing of production and production levels and the results of our exploration and development programs;; current financial resources being sufficient to carry out plans, commitments and business requirements for the next twelve months; movements in commodity prices not impacting the value of any financial instruments; estimated production rates for gold, silver and other metals produced by us; the estimated cost of sustaining capital; availability of sufficient financing; receipt of regulatory approvals; the timing of studies, announcements, and analysis; the timing of construction and development of proposed mines and process facilities; ongoing or future development plans and capital replacement; estimates of expected or anticipated economic returns from our mining projects, including future sales of metals, concentrate or other products produced by us and the timing thereof; our plans and expectations for our properties and operations; and all other timing, exploration, development, operational, financial, budgetary, economic, legal, social, environmental, regulatory, and political matters that may influence or be influenced by future events or conditions.

Such forward-looking information and statements are based on a number of material factors and assumptions, including, but not limited in any manner to, those disclosed in any other of our filings, and include: the inherent speculative nature of exploration results; the ability to explore; communications with local stakeholders; maintaining community and governmental relations; status of negotiations of joint ventures; weather conditions at our operations; commodity prices; the ultimate determination of and realization of Mineral Reserves; existence or realization of Mineral Resources; the development approach; availability and receipt of required approvals, titles, licenses and permits; sufficient working capital to develop and operate the mines and implement development plans; access to adequate services and supplies; foreign currency exchange rates; interest rates; access to capital markets and associated cost of funds; availability of a qualified work force; ability to negotiate, finalize, and execute relevant agreements; lack of social opposition to our mines or facilities; lack of legal challenges with respect to our properties; the timing and amount of future production; the ability to meet production, cost, and capital expenditure targets; timing and ability to produce studies and analyses; capital and operating expenditures; economic conditions; availability of sufficient financing; the ultimate ability to mine, process, and sell mineral products on economically favorable terms; and any and all other timing, exploration, development, operational, financial, budgetary, economic, legal, social, geopolitical, regulatory and political factors that may influence future events or conditions. While we consider these factors and assumptions to be reasonable based on information currently available to us, they may prove to be incorrect.

You should not place undue reliance on forward-looking information and statements. Forward-looking information and statements are only predictions based on our current expectations and our projections about future events. Actual results may vary from such forward-looking information for a variety of reasons including, but not limited to, risks and uncertainties disclosed in our filings on our website at [www.ssrmining.com](http://www.ssrmining.com), on SEDAR at [www.sedar.com](http://www.sedar.com), on EDGAR at [www.sec.gov](http://www.sec.gov) and on the ASX at [www.asx.com.au](http://www.asx.com.au) and other unforeseen events or circumstances. Other than as required by law, we do not intend, and undertake no obligation to update any forward-looking information to reflect, among other things, new information or future events.

All references to "\$" in this presentation are to U.S. dollars unless otherwise stated.

## Qualified Persons

Except as otherwise set out herein, the scientific and technical information contained in this presentation relating to each of the: Çöpler has been reviewed and approved by Robert L. Clifford and Dr. Cengiz Y. Demirci, each of whom is a qualified person under National Instrument 43-101 – Standards of Disclosure for Mineral Projects ("NI 43-101") and our employee; Marigold has been reviewed and approved by Greg Gibson and James N. Carver, each of whom is a SME Registered Member, a qualified person under NI 43-101 and our employee; Seabee has been reviewed and approved by Samuel Mah, P.Eng., and Jeffrey Kulas, P. Geo., each of whom is a qualified person under NI 43-101 and our employee; and Puna has been reviewed and approved by Robert Gill, P.Eng. and Karthik Rathnam, each of whom is a qualified person under NI 43-101 and our employee. The qualified persons have verified the information disclosed herein, including the sampling, preparation, security and analytical procedures underlying such information, and are not aware of any significant risks and uncertainties that could be expected to affect the reliability or confidence in the information discussed herein.

## Cautionary Note to U.S. Investors

This presentation includes Mineral Reserves and Mineral Resources classification terms that comply with reporting standards in Canada and the Mineral Reserves and the Mineral Resources estimates are made in accordance with NI 43-101 - Standards of Disclosure for Mineral Projects ("NI 43-101"). NI 43-101 is a rule developed by the Canadian Securities Administrators that establishes standards for all public disclosure an issuer makes of scientific and technical information concerning mineral projects. These standards differ significantly from the requirements of the SEC set out in the SEC rules that are applicable to domestic United States reporting companies. Consequently, Mineral Reserves and Mineral Resources information included in this presentation is not comparable to similar information that would generally be disclosed by domestic U.S. reporting companies subject to the reporting and disclosure requirements of the SEC. Accordingly, information concerning mineral deposits set forth herein may not be comparable with information made public by companies that report in accordance with U.S. standards.

## Cautionary Note Regarding Non-GAAP Measures

This presentation includes certain terms or performance measures commonly used in the mining industry that are not defined under International Financial Reporting Standards ("IFRS"), including free cash flow, cash costs and AISC per payable ounce of gold and silver sold, realized metal prices, earnings before interest, taxes, depreciation and amortization ("EBITDA"), adjusted attributable net income, adjusted basic attributable earnings per share, consolidated cash and consolidated net cash. Non-GAAP measures do not have any standardized meaning prescribed under IFRS and, therefore, they may not be comparable to similar measures employed by other companies. We believe that, in addition to conventional measures prepared in accordance with IFRS, certain investors use this information to evaluate our performance. The data presented is intended to provide additional information and should not be considered in isolation or as a substitute for measures of performance prepared in accordance with IFRS. Readers should refer to the endnotes in this presentation for further information regarding how we calculate certain of these measures. Readers should also refer to our management's discussion and analysis, available under our corporate profile at [www.sedar.com](http://www.sedar.com) or on our website at [www.ssrmining.com](http://www.ssrmining.com), under the heading "Non-GAAP Financial Measures" for a more detailed discussion of how we calculate such measures and a reconciliation of certain measures to GAAP terms.



# Diversified Portfolio of High Quality, Long-Life Assets

Operations and projects across six jurisdictions

## High Quality Diversified Portfolio

- 2021 production: 720 – 800 koz AuEq <sup>(1)</sup>
- 9+ Moz AuEq Mineral Reserves <sup>(2)</sup>
- 21+ year cornerstone asset life <sup>(3)</sup>

## Free Cash Flow Leader

- Peer leading free cash flow generation / yield <sup>(4,5)</sup>
- Two-tiered capital return policy implemented
- Base dividend implies ~\$60/oz / 1.3% yield

## Balance Sheet Strength

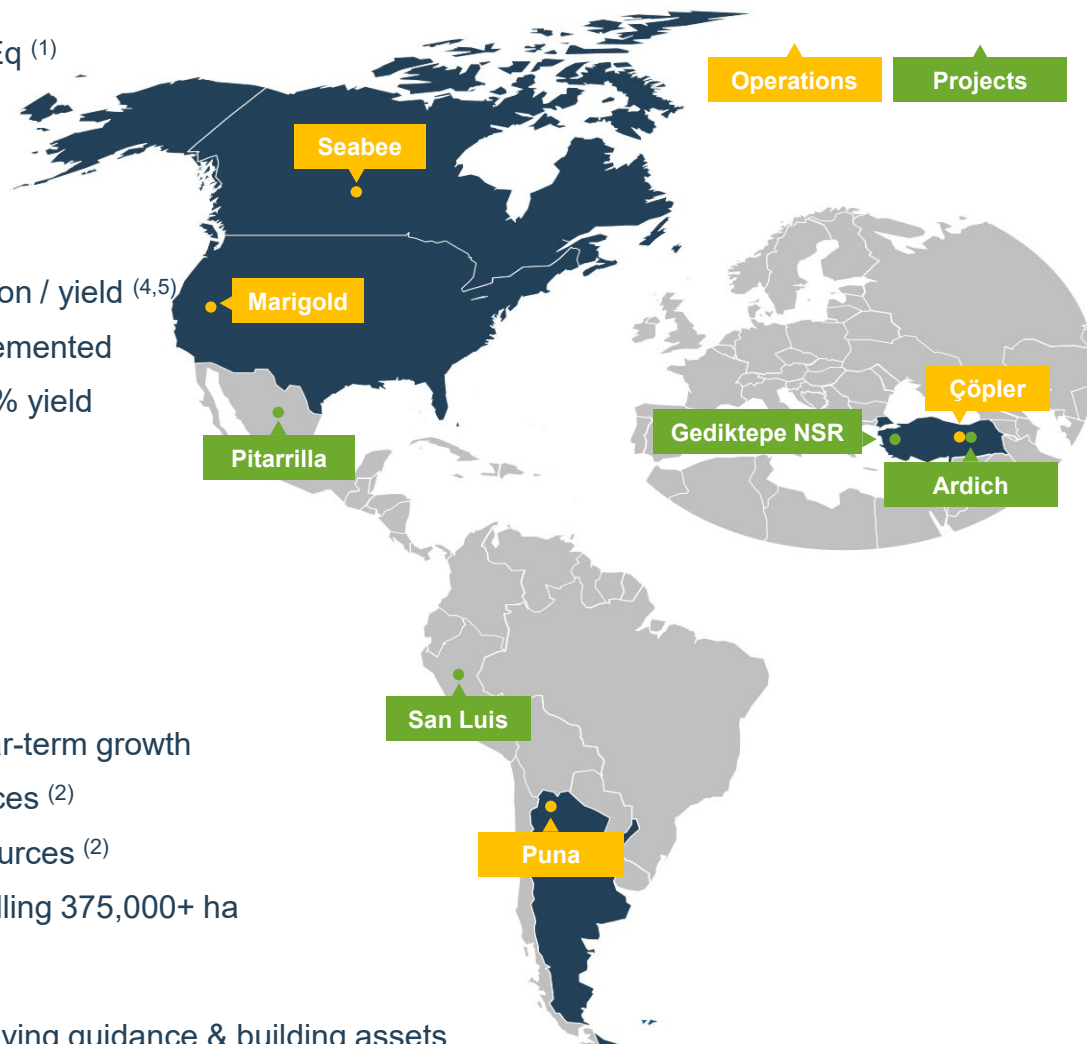
- Consolidated Cash: \$897M <sup>(6)</sup>
- Consolidated Net Cash: \$457M <sup>(6)</sup>
- Ability to fund organic growth

## Organic Growth Potential

- High return, low capital intensity near-term growth
- 24+ Moz AuEq M&I Mineral Resources <sup>(2)</sup>
- 5+ Moz AuEq Inferred Mineral Resources <sup>(2)</sup>
- Six district scale land packages totalling 375,000+ ha

## Experienced Leadership

- Track record of value creation, achieving guidance & building assets
- Diverse mining and processing skill set





# Developing a Sustainable Legacy

Successful culture focused on discipline and integrity <sup>(7)</sup>

## Environmental Responsibility



- ✓ **Zero significant environmental incidents or spills**
- ✓ **Focus on tailings management**
- ✓ **Excellence in cyanide management**

### Turkey

- Investigating introduction of solar power

### U.S.

- First mine in the world to be certified under the International Cyanide Management Code

### Canada

- Reduced cyanide consumption by 60% under SSR Mining ownership

### Argentina

- Extensive EIA process

## Safe Production



- ✓ **Zero fatalities**
- ✓ **COVID-19 management plans at all sites and offices**
- ✓ **Improved Total Recordable Injury Frequency Rate**
- ✓ **Continuous improvement in critical controls**

### Turkey

- Awarded the 2020 SME Health and Safety Operational Excellence Award
- 22M lost-time injury free hours
- Total Recordable Injury Frequency Rate (per million hours worked) of 2.6 <sup>(7)</sup>

### U.S., Canada, Argentina

- Marigold awarded first place by the Nevada Mining Association for safety for large metal operator in 2020
- Significant reduction in DPM at Seabee
- No diagnosed occupational illnesses

## Governance, Social Performance and Diversity



- ✓ **Material investment in communities**
- ✓ **Social development funds**
- ✓ **Focus on local procurement and employment**
- ✓ **Diversity and inclusion across the organization**

### Turkey

- +\$1.3B total procurement spend since 2015
- 99% of workforce is Turkish
- 142 scholarships (50% female)

### U.S., Canada

- Diversity scholarships at universities
- 34% of Seabee employees identify as Indigenous

### Argentina

- 100% of new hires from local communities and ~30% are female
- Six school renovations since 2012



# 2021 Outlook

Operational delivery, free cash flow generation, capital returns and growth



## Corporate

### Priorities

- Continued operational delivery and free cash flow generation across all mines
- Health & safety focus across the portfolio
- Capital returns

## Assets

### Çöpler

- Flotation circuit construction and ramp-up
- Ardich exploration and development
- C2 exploration and advancement

### Marigold

- Ongoing cost reduction and continuous improvement initiatives
- Oxide exploration targeting higher grades and conversion at Mackay, Valmy, New Millennium, Trenton Canyon and Buffalo Valley
- Sulfide exploration and evaluation

### Seabee

- Increase mining rates to exploit latent mill capacity
- Gap Hanging Wall Mineral Resource conversion
- Seabee and Fisher exploration and resource development

### Puna

- Maintain mill throughput rates above 4,000 tonnes per day
- Implement and integrate owner-operated ore transport fleet

### 2021 Production Guidance <sup>(1)</sup>

Çöpler	Au koz	310 – 340
Marigold	Au koz	235 – 265
Seabee	Au koz	95 – 105
Puna	Ag Moz	6.0 – 7.0
<b>Consolidated</b>	<b>AuEq koz</b>	<b>720 – 800</b>

### 2021 AISC Guidance <sup>(1,8)</sup>

Çöpler	\$ / Au oz	\$760 – \$810
Marigold	\$ / Au oz	\$1,250 - \$1,290
Seabee	\$ / Au oz	\$860 - \$910
Puna	\$ / Ag oz	\$16.00 - \$17.50
<b>Consolidated</b>	<b>\$ / AuEq oz</b>	<b>\$1,050 - \$1,110</b>

### Growth <sup>(1)</sup>

Capital Expenditures	\$M	\$33
Exploration	\$M	\$54
<b>Consolidated</b>	<b>\$M</b>	<b>\$87</b>

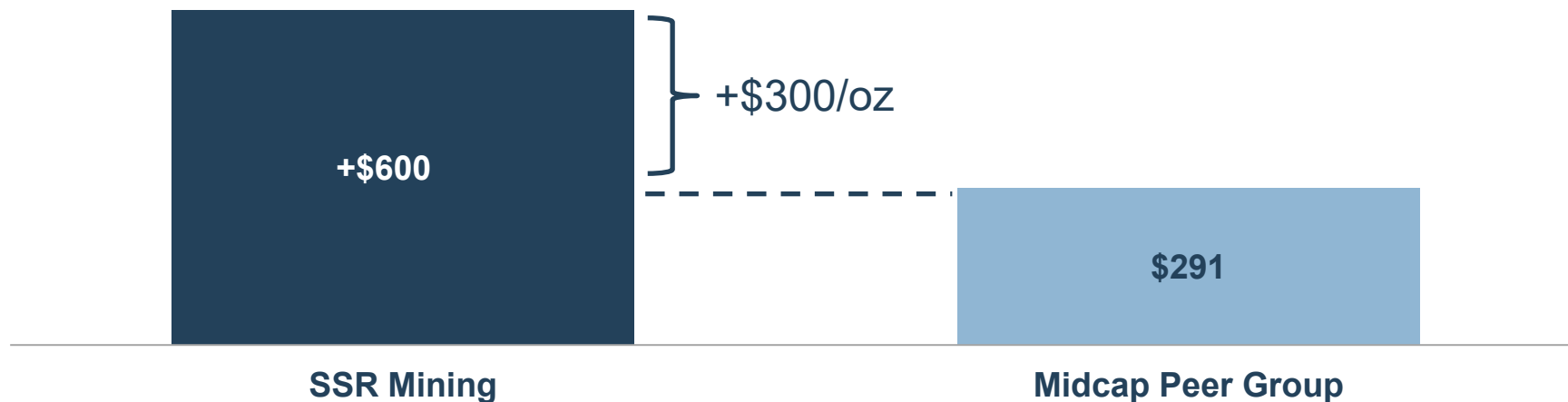


# Free Cash Flow Leader

## Peer leading free cash flow generation and yield

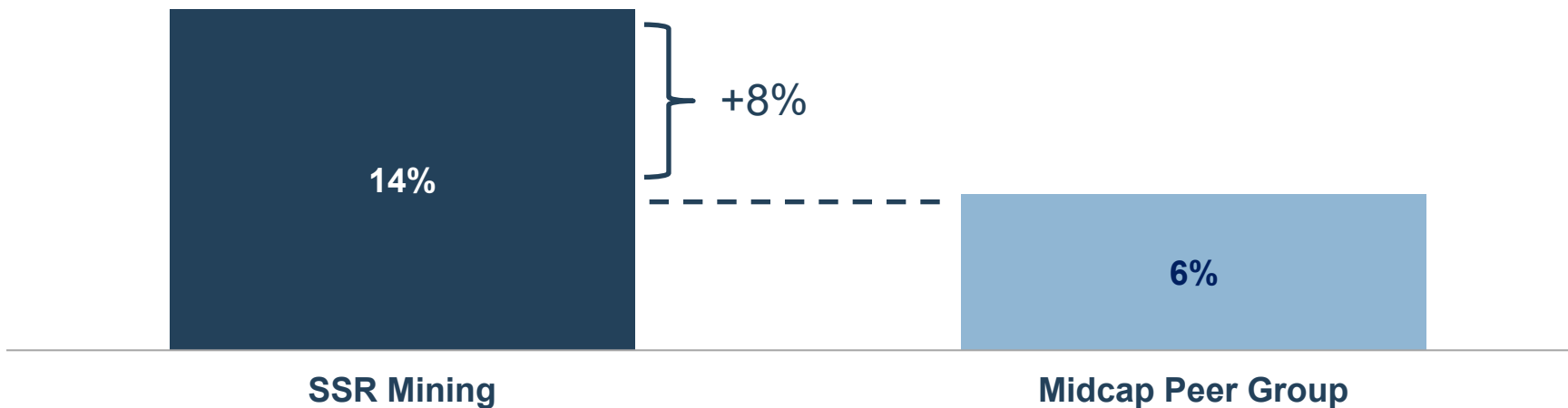
### 2021E Consensus Free Cash Flow Per Ounce <sup>(4,5)</sup>

US\$ per ounce | Consensus Free Cash Flow (100% basis) / Consensus Ounces Produced



### 2021E Consensus Free Cash Flow Yield <sup>(4,5)</sup>

% | Consensus Free Cash Flow (100% basis) / Market Capitalization





# Significant Financial Strength

## Robust balance sheet and credit metrics



### ~\$900M of Consolidated Cash <sup>(6)</sup>

Market Capitalization <sup>(9)</sup>	~\$3.4B	Net Debt to 2021E EBITDA <sup>(10)</sup>			
Debt <sup>(6)</sup>	\$440M	Centamin (0.6x)			
Consolidated Cash <sup>(6)</sup>	\$897M	IAMGOLD (0.5x)			
Consolidated Net Debt (Cash) <sup>(6)</sup>	(\$457)M	Centerra (0.5x)			
Net Debt to '21 Consensus EBITDA <sup>(10)</sup>	(0.5x)	SSR Mining (0.5x)			
		Alamos (0.4x)			
		B2Gold (0.3x)			
		Northern Star	0.1x		
		Eldorado	0.1x		
		Evolution	0.1x		
		Endeavour	0.2x		
		OceanaGold	0.3x		
		Yamana	0.3x		
		Equinox	0.4x		

Debt	Face Value (\$M)	Maturity	Interest Rate
Project Finance	US\$210	2023	LIBOR + 3.50% - 3.70%
Convertible Notes	US\$230	2033	2.50%
Credit Facility (\$75M capacity)	US\$0	2021	LIBOR + 2.50% - 4.50%

↑ Net Cash

↓ Net Debt



# Capital Return Policy

## Inaugural Base Dividend Announced



### Capital Allocation Strategy

Continued investment in high-return growth  
Maintain peer leading financial strength  
Provide sustainable capital returns to shareholders

### Base Dividend

Quarterly 'Base Dividend' of \$0.05 per share  
Declared Q1 2021  
Yield of approximately 1.3%  
Implies ~\$60/oz



### Supplemental Dividend

Periodically assessed should gold price stay  
above Mineral Reserve price  
Based on trailing 12-month excess free cash flow

### Share Buybacks

Evaluated periodically in lieu of  
Supplemental Dividend  
Dependent on prevailing market conditions and  
equity valuations



# Robust Exploration and Growth Pipeline

## Near Mine Targets to Sustain and Grow From 700 – 800koz AuEq for at least 10+ years

### Çöpler District (+325koz<sup>11</sup>)

Ardich

Çöpler In-Pit

Çöpler Saddle

### Marigold (+250koz<sup>11</sup>)

Mackay

Valmy

New Millennium

### Seabee (+100koz<sup>11</sup>)

Santoy Gap HW

Santoy HW

Santoy FW

### Puna (+6.5Mozpa<sup>11</sup>)

Chinchillas

Regional

## Growth Targets Provide Step Change Upside

### Turkish Exploraion

C2 Copper-Gold

Çöpler District

Copper Hill

### Marigold

Trenton Canyon  
Oxides

Trenton Canyon  
Sulfides

Buffalo Valley

### Seabee

Batman

Fisher

Lizard Lake  
Pluton

### Global

Pitarrilla

San Luis

Amisk



# Overview of Assets



# Çöpler: World-Class Long-Life Operation

<b>Location:</b> Turkey	<b>Stage:</b> Production	<b>Ownership:</b> 80%
<b>Mining:</b> Open pit	<b>Processing:</b> Heap leach, POX	<b>Land:</b> ~17,000 ha

## Q4 2020 Highlights

- 4Q20 gold production of 83 koz at \$748 /oz AISC
- Production in-line with revised mine plan adopted to diversify ore sources due to operator shortfalls related to COVID-19
- Sulfide plant continues to efficiently operate above design throughput
- Board approval of flotation circuit construction
- CDMP technical report validates long-term value and organic growth
- C2 copper-gold porphyry discovery demonstrates asset quality

## 2021 Priorities

- Flotation plant construction and expected ramp-up beginning mid-year 2021
- Ardich exploration and concurrent development towards first production in 2023
- C2 exploration and advancement, focusing on expandable development plan
  - Metallurgical testwork on-going
- Regional exploration initiatives across the Çöpler district

## POX Plant

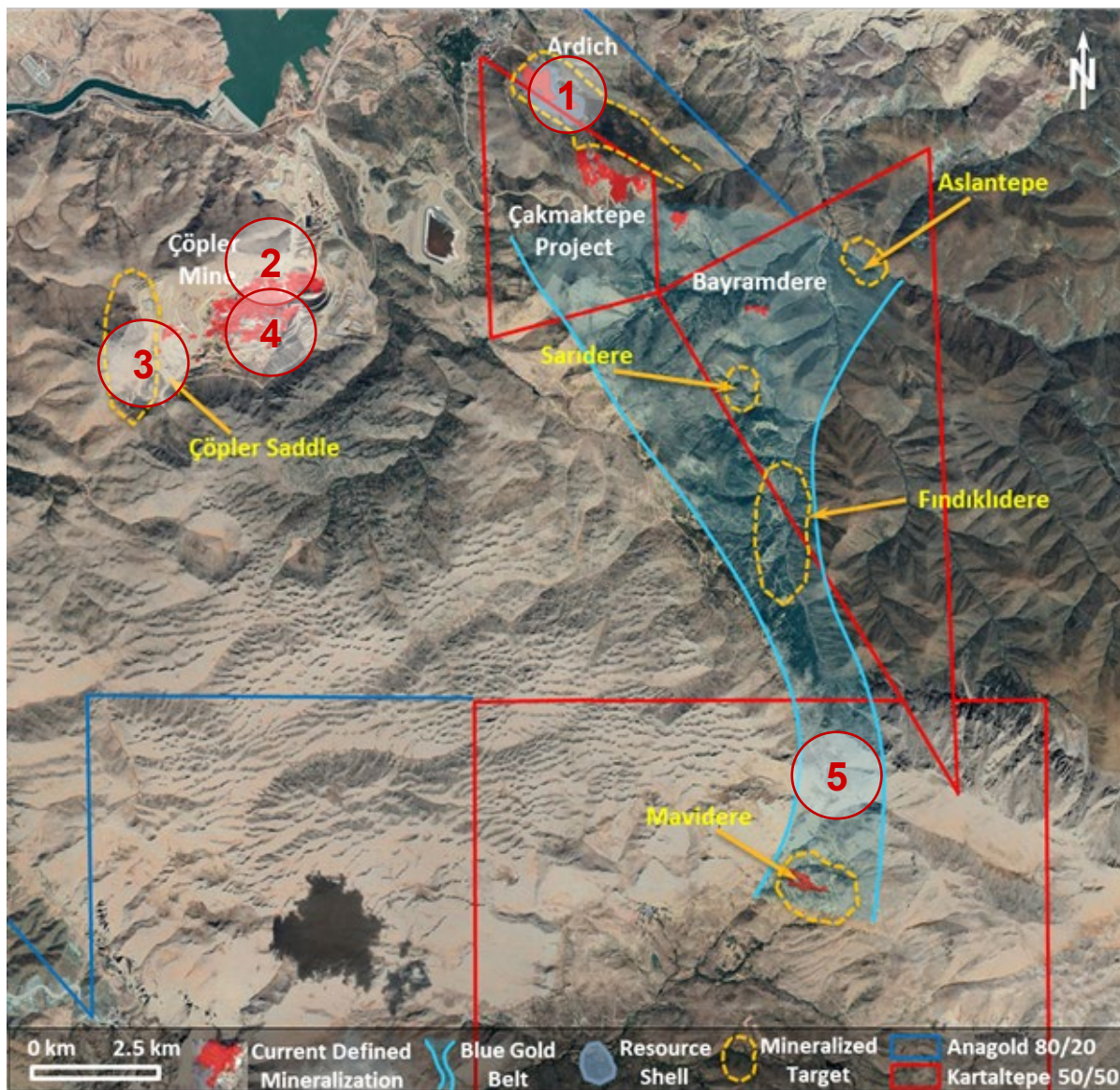


		2020 Actual	2021 Guidance <sup>(1)</sup>
Gold Production	Au koz	327	310 – 340
Mine-site AISC <sup>(8)</sup>	\$ / oz	\$752	\$760 - \$810



# Çöpler District Growth Pipeline

\$33M budget focused on conversion, additions and discovery



## Infill / Resource Conversion

- 1** Ardich
- 2** Çöpler In-Pit
- 3** Çöpler Saddle

## New Target Exploration / Definition

- 4** C2 Copper-Gold
- 5** Mavıaltın
- 6** Turkey Regional



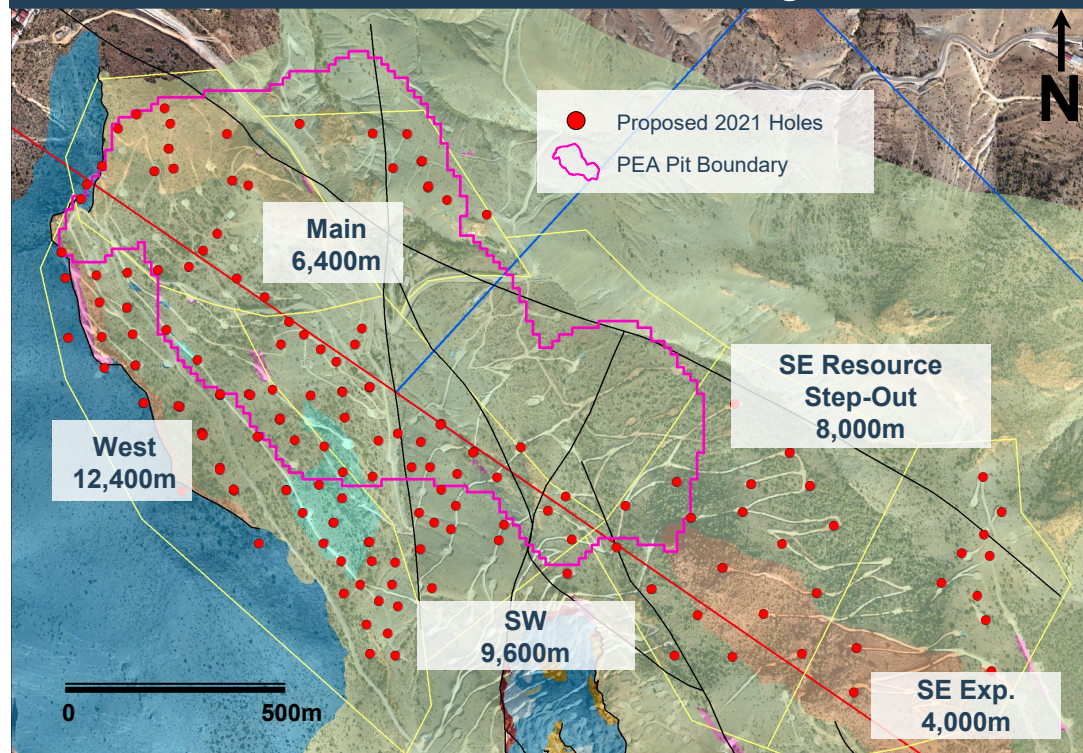
# Ardich: Targeting Upside to PEA Case

Strong potential for conversion and resource growth

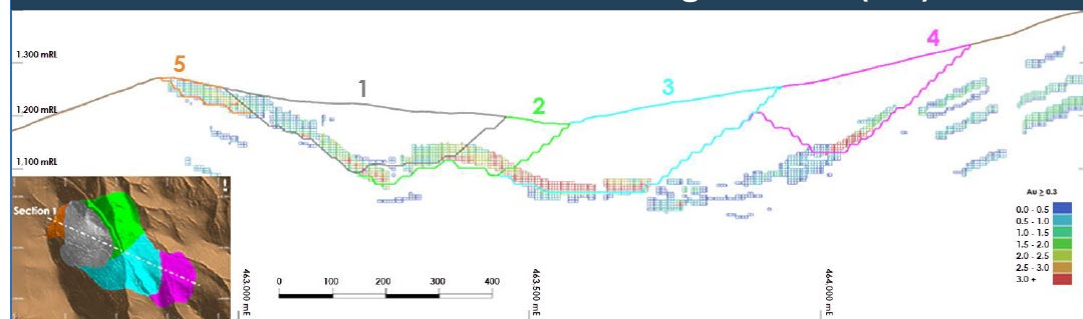
## Overview

- Ardich located ~6 km from Çöpler
- 2020 Mineral Resource and PEA case included 314 holes as of February 2020
  - Total drilling: 62,344 meters
  - 0.9Moz M&I oxide Mineral Resources
    - 0.25Moz Inferred
  - 0.3Moz M&I sulfide Mineral Resources
    - 0.1Moz Inferred
- 2021 exploration program
  - Enlarge mineralization and fill resource gaps to increase resource confidence
  - 40,000 meters budgeted
- Potential for pit phase optimization and resource growth vs. PEA case
- 1.1Moz produced over 11-years, beginning 2023, \$50M development capex

## Ardich 2021 Planned Drilling



## Ardich PEA Pit Phases – Long Section (NE)





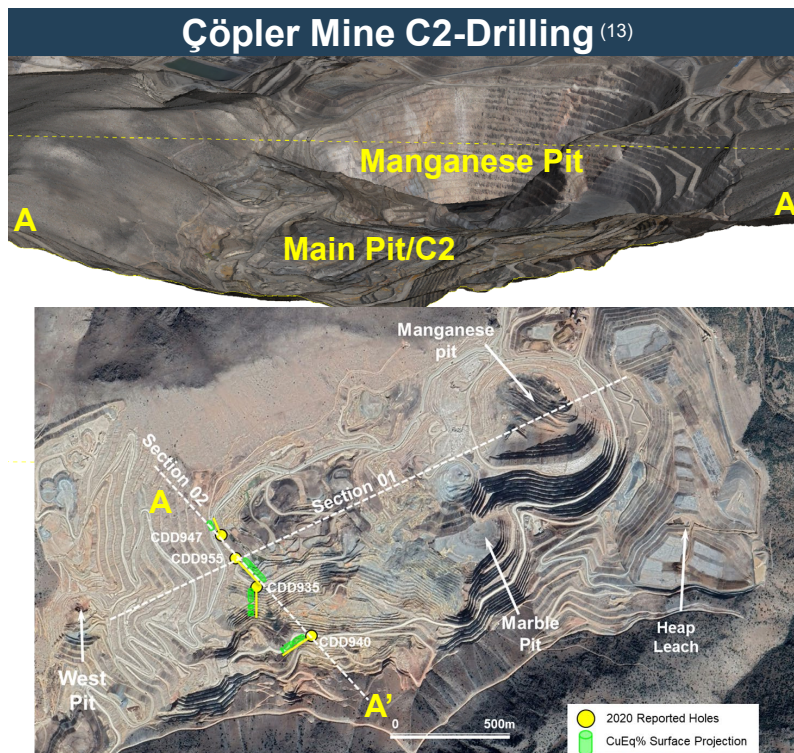
# C2 Copper-Gold Porphyry - Below Çöpler Main Pit

Intercept of 0.74% CuEq<sup>(12)</sup> over 241.5m, including 1.77% CuEq<sup>(12)</sup> over 32m

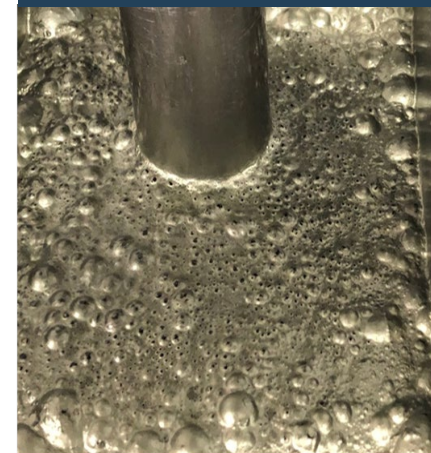
## 2021 Development

- 9 drills mobilized to C2
- A total of 11 holes now drilled – showing mineralization
- Initial metallurgical test work underway with promising indications
- Study team mobilizing
- Study program and funding request in development

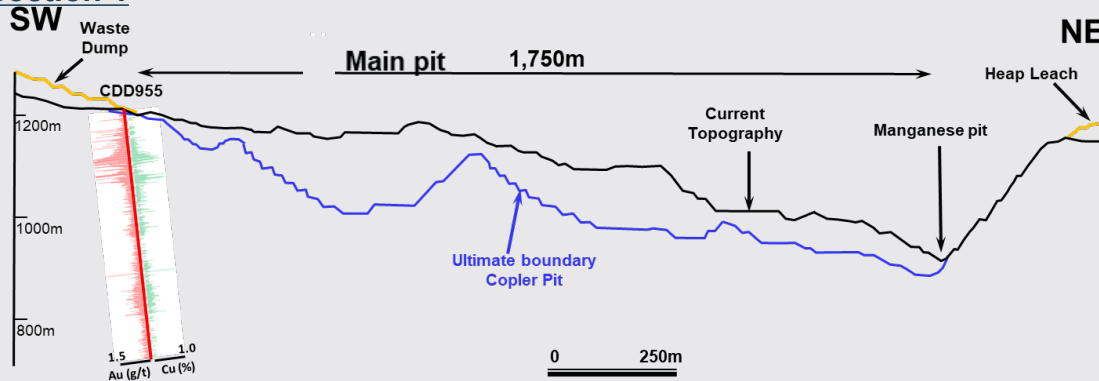
## Çöpler Mine C2-Drilling<sup>(13)</sup>



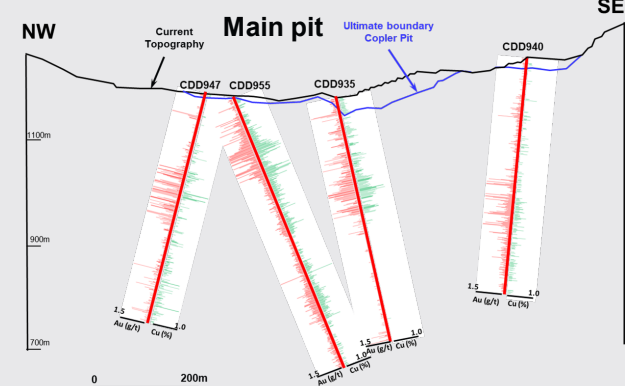
## Flotation Test



## Section 1



## Section 2





# Marigold: Large-Scale Open Pit in Nevada

**Location:** Nevada, USA      **Stage:** Production      **Ownership:** 100%  
**Mining:** Open pit      **Processing:** Run-of-mine, heap leach      **Land:** ~20,000 ha

## Q4 2020 Highlights

- Record 4Q20 gold production of 77 koz at \$1,070 /oz AISC
- 15% production increase vs. previous quarterly record
- Annual gold production of 234 koz a record in the mine's 32-year history
- Record full-year material movement of 85 Mt due to increased fleet capacity and shorter haulage cycles
- Stacked > 75,000 recoverable gold ounces in Q4
- Costs impacted by higher royalty expense due to higher gold prices

## 2021 Priorities

- Ongoing cost reduction and continuous improvement initiatives
- Oxide exploration targeting higher grade and conversion at Mackay, Valmy, New Millennium, Trenton Canyon and Buffalo Valley
- Exploration and development planning at Trenton Canyon and Buffalo Valley
- Sulfide exploration

## Marigold Rope Shovel

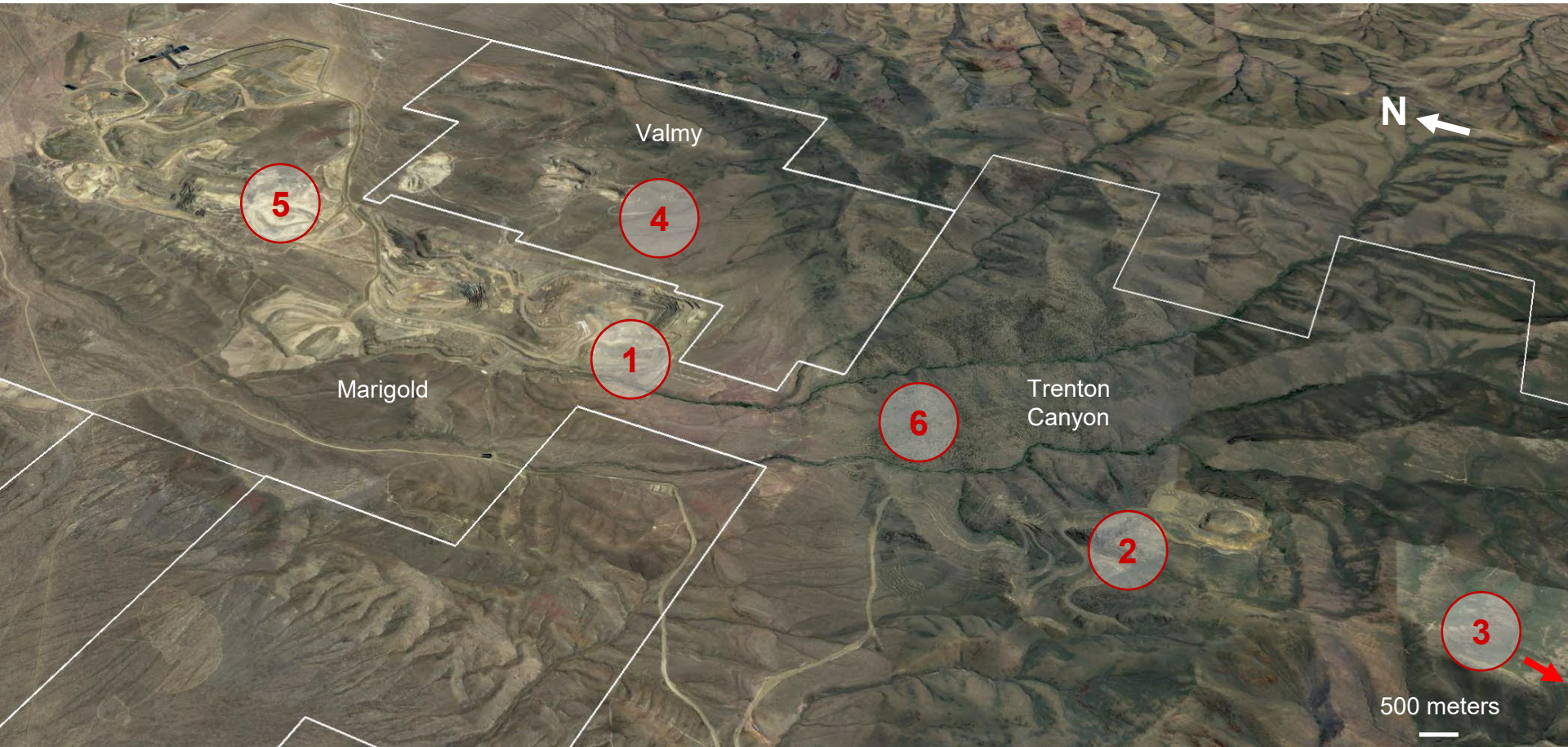


		2020 Actual	2021 Guidance <sup>(1)</sup>
Gold Production	Au koz	234	235 – 265
Mine-site AISC <sup>(8)</sup>	\$ / oz	\$1,222	\$1,250 - \$1,290



# Marigold Growth Pipeline

+70,000 meters of drilling planned in 2021



1

New Millennium

2

Trenton Canyon

3

Buffalo Valley

4

Valmy

5

Mackay Pit

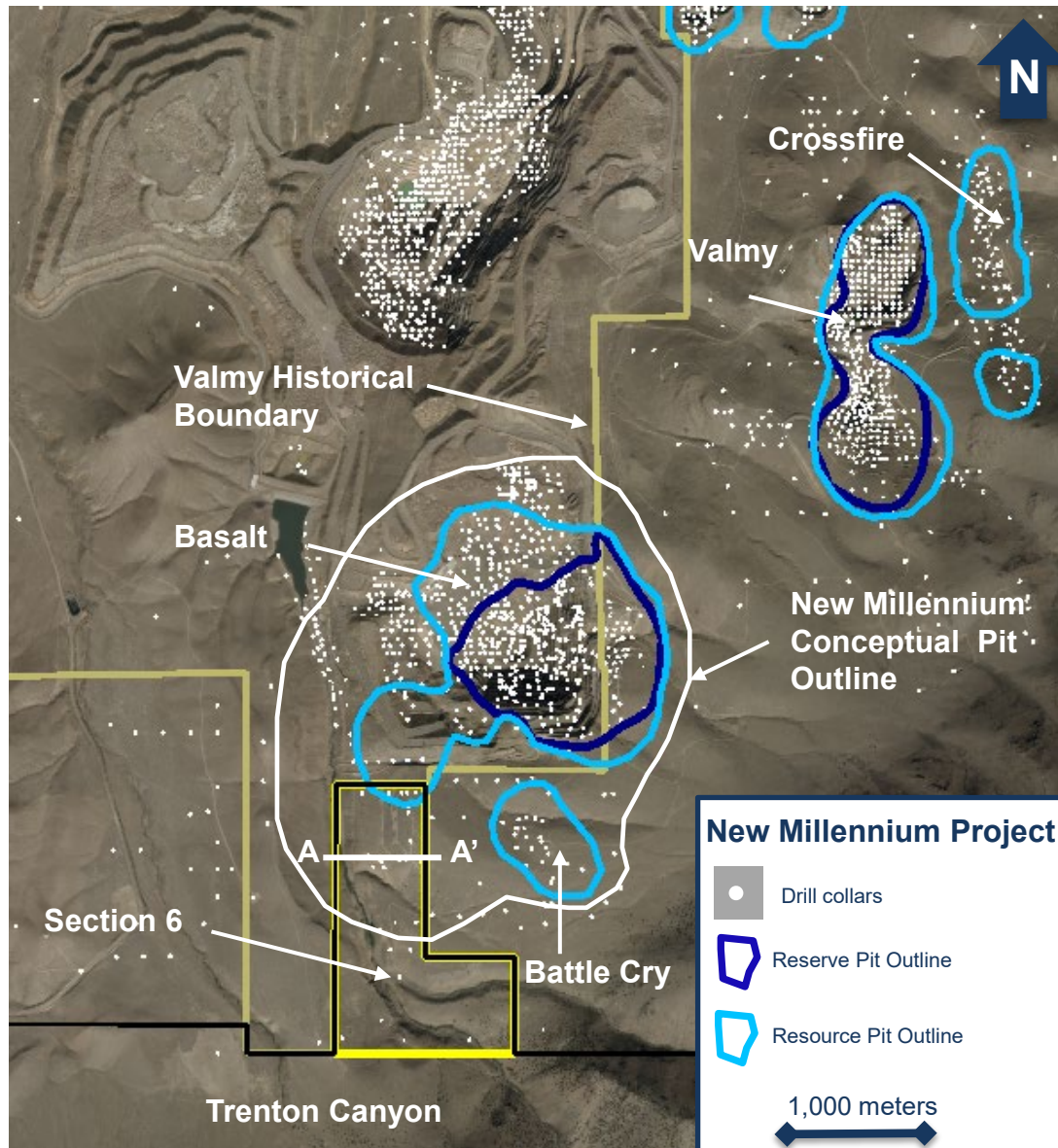
6

Deep Sulphide



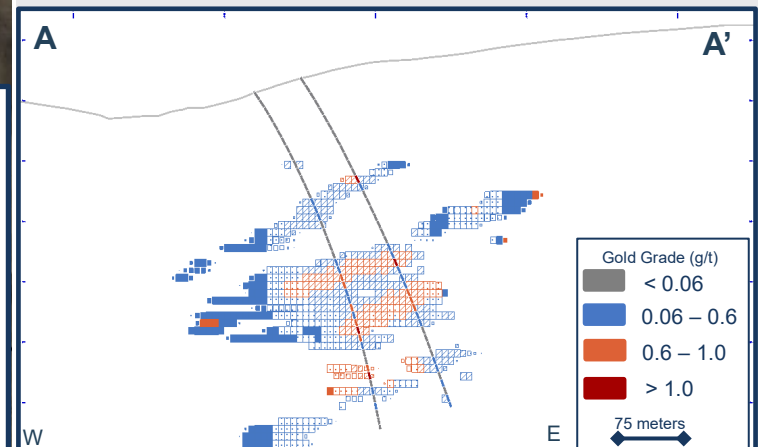
# Marigold: Barriers Removed, New Millennium Concept

Provides resource upside with higher grade potential



## New Millennium

- Concept uncovered with recent property purchases Valmy and Section 6
- Basalt and Antler pits historically mined ~1Moz at 0.75 g/t Au
- Basalt current Mineral Resources 0.5Moz at 0.67 g/t Au (EOY 2019)
- Basalt pit historically constrained to the east by Valmy boundary
- ~30,000 meters drilling planned for 2021
- Potential for synergies with Trenton Canyon oxides





# Seabee: High-Grade Underground in Canada

**Location:** Saskatchewan, Canada      **Stage:** Production      **Ownership:** 100%

**Mining:** Underground      **Processing:** Gravity concentration, cyanide leaching      **Land:** ~60,000 ha (including joint venture)

## Q4 2020 Highlights

- Strong 4Q20 gold production of 32 koz at \$787 / oz AISC
- Quarterly mill throughput averaged 1,081 tpd
- Mill feed grade averaged 9.85 g/t
- Advanced underground access into Gap HW orebody
- Continued focus on increasing underground development rates
- Formed joint venture on Fisher property (SSRM 80%, operator)

## 2021 Priorities

- Increase mining rates to exploit latent mill capacity
- Gap HW Mineral Resource conversion
- Advance Santoy Hanging Wall near mine exploration target
- Accelerate Seabee and Fisher exploration and resource development

## Seabee Mill

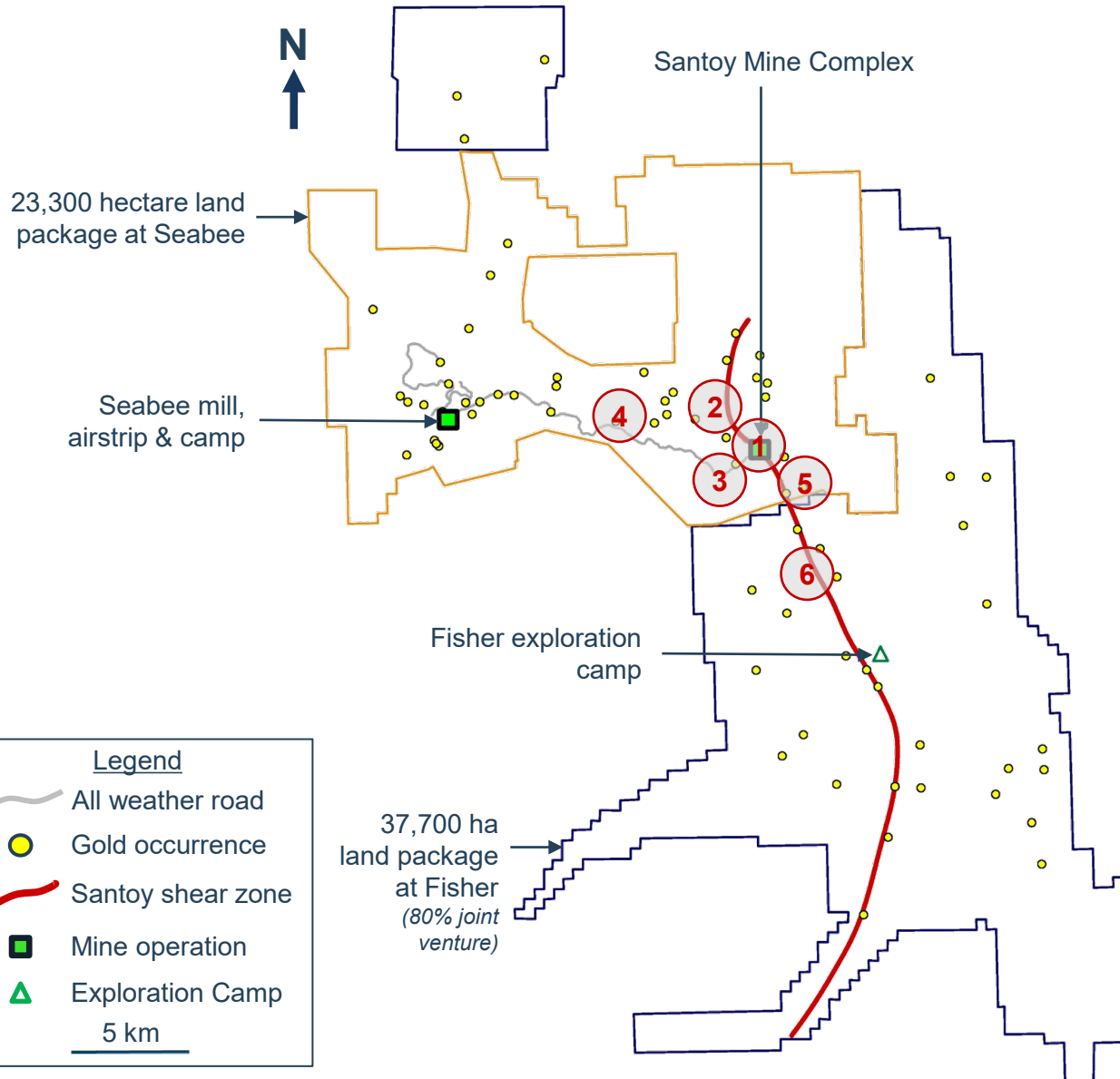


		2020 Actual	2021 Guidance <sup>(1)</sup>
Gold Production	Au koz	82	95 – 105
Mine-site AISC <sup>(8)</sup>	\$ / oz	\$939	\$860 - \$910



# Seabee Growth Pipeline

Testing +30km of shear zone strike length



## Infill / Resource Conversion

- 1 Santoy 8/9 Infill  
Santoy Gap HW
- 2 Santoy HW  
Santoy FW

## New Target Exploration / Definition

- 3 Batman and Joker
- 4 Shane
- 5 Lizard Lake Pluton
- 6 Fisher



# Puna: Large Silver Producer

<b>Location:</b> Argentina	<b>Stage:</b> Production	<b>Ownership:</b> 100%
<b>Mining:</b> Open pit	<b>Processing:</b> Flotation	<b>Land:</b> ~10,000 ha

## Q4 2020 Highlights

- 4Q20 production of 2.2 Moz Ag at AISC of \$15.90 / oz
- Produced 5.6 Moz Ag in 2020, exceeding updated full-year guidance
- Sales of 1.0 Moz Ag lagged production due to timing of concentrate sales
- Quarterly mill throughput averaged 4,517 tpd
- AISC impacted during the quarter to due to lower sales volumes

## 2021 Priorities

- Continue steady state production with focus on increasing productivity
- Maintain mill throughput rates above of 4,000 tonnes per day
- Focus on cost reduction, including transition to owner-operated ore transport fleet

## Chinchillas Mine



		2020 Actual	2021 Guidance <sup>(1)</sup>
Silver Production	Ag Moz.	5.6	6.0 – 7.0
Mine-site AISC <sup>(8)</sup>	\$ / oz.	\$15.22	\$16.00 - \$17.50



### Production and Free Cash Flow

- Strong quarterly production of 220 koz AuEq
- Low quarterly AISC of \$976 / oz
- Generated \$157M<sup>(5)</sup> in FCF in Q4 2020

### Investment Catalysts

- Delivered CDMP technical report with two value enhancing scenarios
- Discovered C2 copper-gold porphyry below Çöpler pit

### Strong Financial Position

- Consolidated cash of \$897M<sup>(6)</sup> net cash \$457M<sup>(6)</sup>
- Declared inaugural quarterly dividend of \$0.05 / share
- Track record of disciplined capital allocation

### Exploration Upside

- Çöpler: C2, Ardich, Mavialtin, Copper Hill
- Marigold: New Millennium, Trenton Canyon, Valmy
- Seabee: Gap HW, Santoy FW / HW, Fisher



# Appendix



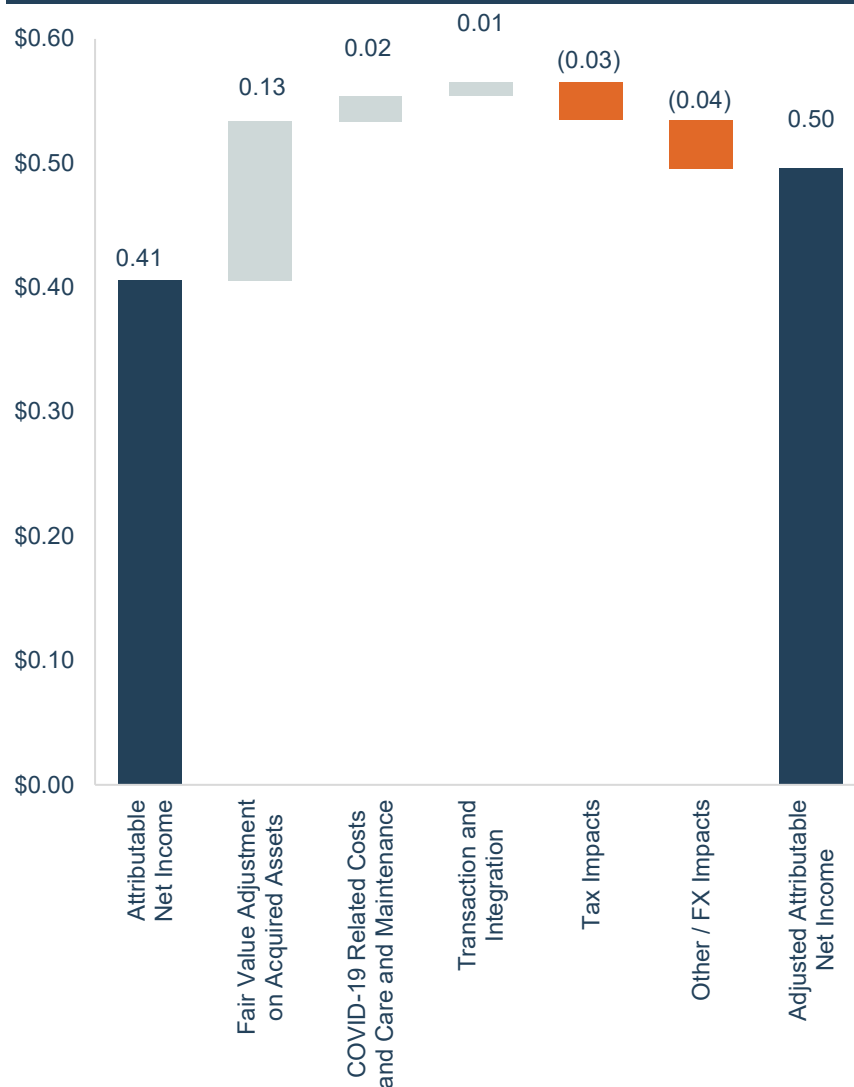
# Strong Quarterly Financial Results



## Financial Highlights <sup>(15)</sup>

	Units	Q4 2020	Q4 2019
<b>Gold Equivalent Production</b>	oz	<b>220,432</b>	106,205
<b>Gold Sales</b>	oz	<b>182,328</b>	85,404
<b>Silver Sales</b>	Moz	<b>1.0</b>	2.6
<b>Total Gold Equivalent Sales</b>	oz	<b>194,862</b>	114,268
<b>Revenue</b>	\$M	<b>\$370.7</b>	\$177.6
<b>Income from Mine Operations</b>	\$M	<b>\$146.5</b>	\$58.9
<b>Net Income</b>	\$M	<b>\$97.7</b>	\$19.5
<b>Attributable Net Income</b>	\$M	<b>\$89.0</b>	\$19.5
<b>Basic Attributable Earnings per share</b>	\$	<b>\$0.41</b>	\$0.16
<b>Adjusted Attributable Net Income <sup>(14)</sup></b>	\$M	<b>\$108.8</b>	\$23.7
<b>Adjusted Basic Attributable Earnings per share <sup>(14)</sup></b>	\$	<b>\$0.50</b>	\$0.19
<b>Cash Generated by Operating Activities</b>	\$M	<b>\$217.4</b>	\$51.9
<b>Consolidated Cash <sup>(6)</sup></b>	\$M	<b>\$897.0</b>	\$506.0

## EPS Bridge





1. Please see our news release dated January 19, 2021. Gold equivalent production and AISC are based on a 76:1 gold to silver ratio. AISC is a non-GAAP financial measure. See "Cautionary Note Regarding Non-GAAP Measures" in this presentation.
2. Mineral Reserves and Mineral Resources for Marigold, Seabee, Puna, San Luis, Pitarrilla, and Amisk as at December 31, 2019. Çöpler, Ardich, Çakmaktepe, and Bayramdere as at November 2020. Mineral Reserves and Mineral Resources are shown on a 100% basis. Mineral Resources are stated inclusive of Mineral Reserves. Gold equivalent Mineral Reserves and Mineral Resources are gold and silver only (exclude copper, lead and zinc) and are based on a 70:1 gold to silver ratio.
3. These statements and estimates are extracted from, or based on, the Çöpler District Master Plan 2020 Technical Report, dated November 30, 2020.
4. Based on the aggregate of the "street" consolidated consensus estimates for 2021 for SSR Mining sourced from an average of BMO, Canaccord, CIBC, Cormark, NBF, PI Financial, Scotiabank and UBS research estimates as at February 24, 2021. Peer group estimates sourced from Bloomberg and Capital IQ. Estimates are intended to provide an "order of magnitude" indication for illustrative and comparison purposes only, and are not intended to be, and should not be treated as, a forecast, estimate or guidance made, adopted, confirmed or endorsed by SSR Mining.
5. Free cash flow is a non-GAAP financial measure. Free cash flow per gold equivalent ounce is defined as operating cash flow less capex divided by gold equivalent production. Please see "Cautionary Note Regarding Non-GAAP Measures" in this presentation.
6. Consolidated cash balance, a non-GAAP financial measure, as at December 31, 2020. SSR Mining's consolidated cash included restricted cash of \$35 million and attributable cash held by joint ventures of \$1 million as at December 31, 2020. Debt balance is the sum of the short term and long-term portion of finance facility totaling \$210 million and the face value of 2019 convertible notes of \$230 million as disclosed in SSR Mining's unaudited condensed consolidated financial statements as at December 31, 2020. See "Cautionary Note Regarding Non-GAAP Measures" in this presentation. The 2019 convertible notes bear interest at 2.50% payable semi-annually and are convertible by holders into the Company's common shares, based on an initial conversion rate of 54.1082 common shares per \$1,000 principal amount. On or after April 1, 2023 the Company may redeem all or part of the notes for cash, but only if the last reported sale price of the Company's common shares exceeds 130% of the conversion price. On or after April 1, 2026, the Company may redeem the 2019 Notes, in whole or in part, for cash equal to 100% of the 2019 Notes to be redeemed, plus accrued and unpaid interest, if any, to, but excluding, the redemption date. Holders may require the Company to purchase all or a portion of their 2019 Notes on each of April 1, 2026, April 1, 2029, and April 1, 2034 for cash at a purchase price equal to 100% of the principal amount of the 2019 Notes to be purchased, plus accrued and unpaid interest, if any, to, but excluding, the purchase date.
7. Based on Alacer Gold and SSR Mining 2019 sustainability reports. Based on 2019 data except for Turkey TRIFR, which is 2020 data.
8. AISC per payable ounce of gold and silver sold are non-GAAP financial measures. See "Cautionary Note Regarding Non-GAAP Measures" in this presentation.
9. Market capitalization as of February 24, 2021.
10. Based on the aggregate of the "street" consensus estimates; Capital IQ as at February 24, 2021. Consensus estimates are intended to provide an "order of magnitude" indication for illustrative and comparison purposes only, and are not intended to be, and should not be treated as, a forecast, estimate or guidance made, adopted, confirmed or endorsed by SSR Mining. EBITDA is a non-GAAP financial measure. See "Cautionary Note Regarding Non-GAAP Measures" in this presentation.
11. Based on the mid-point of 2021 guidance. See our news release dated January 19, 2021.
12. Copper equivalent calculated as  $CuEq = [Cu\ ppm + ((Au\ ppm \times Au\ price(g) / Cu\ price(g)) / 10000)]$ . Based upon metal prices of \$1,750/oz gold and \$3.00/pound copper with recovery assumed to be 100% as no metallurgical test data is not completed. CuEq will change proportionally to the metal's relative recoveries once metallurgical test work is complete. Intervals reported are sections with more than 0.2% CuEq (and a minimum 0.1%Cu) and less than of 5 meters contiguous dilution.
13. Please see our news release dated November 24, 2020.
14. Adjusted basic attributable net income and earnings per share is a non-GAAP financial measure. See "Cautionary Note Regarding Non-GAAP Measures" in this presentation.
15. Gold sales, silver sales and gold equivalent sales are on a 100% basis. Gold equivalent sales are based on total gold and silver sales and the realized silver and gold prices for each corresponding period. Realized metal prices, adjusted attributable net income, adjusted basic attributable earnings per share, and consolidated cash are non-GAAP financial measures. Please see "Cautionary Note Regarding Non-GAAP Measures" in this presentation.





**SSR Mining Inc.**  
**[www.ssrmining.com](http://www.ssrmining.com)**  
**F. Edward Farid, Executive Vice President, Chief Corporate Development Officer**  
**Brian Martin, Director, Corporate Development & Investor Relations**  
**Telephone: +1 888.338.0046 or +1 604.689.3846**  
**Email: [invest@ssrmining.com](mailto:invest@ssrmining.com)**